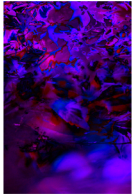


All works are created by layering images of everyday objects- leaves, and re-presented to show the hidden beauties in the reality of everyday life by revealing the hidden beauties within the leaves.
 (total of 4 different photographs used in different combination for all images.)
 Depth is used to draw the viewer into the place of imagination where the impossible is possible.
 Each work is a window, a space contained and something to enter in to, a place where the imagination can run free



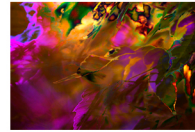
#1

black and white representing traditional thought and reality, merging with the bright colours representing imagination and possibility



#2

colours of cosmos, looks similar to neuro pathways in brain, image relates the individual to the universe and the endless possibilities we have when we engage in the imagination and our abilities to create in the universe.



#3

Using colour this image is about delving fully into the imaginative and creative realm where the impossible is possible



#4

Relates to image #1, with Black and white... a misty effect, mysterious realm. Sharp lines contrast with softer lines merging reality and mysterious. Strong contrast in colour defines the 2 different realms of reality and mystery.



#5

Unusual colour combo of blue and brown used to inspire new possibilities, tied together with the pink areas (effect from lens flare) which moves thru the image creating continuity



#6

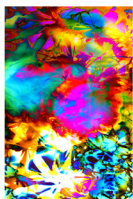
Using a combination of natural colours relating to reality and contrasting bright colours, which inspire creativity, the image speaks about finding the possibilities within everyday ordinary.



#7

New colour combinations merge layers and "windows" are created by layers into imaginative creative realm.

Maintaining the clear leaf lines creates the parameters of the message and is something for viewers to relate to while possibilities are formed



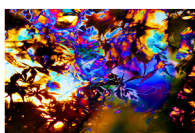
#8

Texture thru the centre contrasts with the sharper edges at top and bottom creating multi layer and multi dimensional image, creating possibilities and inspiring the imagination.



#9

looks almost like a butterfly- using an everyday object to create the impression of another, everything in the natural is related and can be used to create a familiar formation, again all you need is imagination.



#10

Unusual colour combo is used to challenge paradigms of thought and concepts, "break the rules", to create new options and possibilities



#11

Using 2D images multiplied to create movement- a 3D effect, and then presented in a 2D form



#12

An electric sort of flower created by leaves(the ordinary), the energy and movement designed to stimulate imagination. The movement in the image draws the viewer into the centre, and into a creative place.